

Central Brass

COMPANY

Brecksville, Ohio 44141

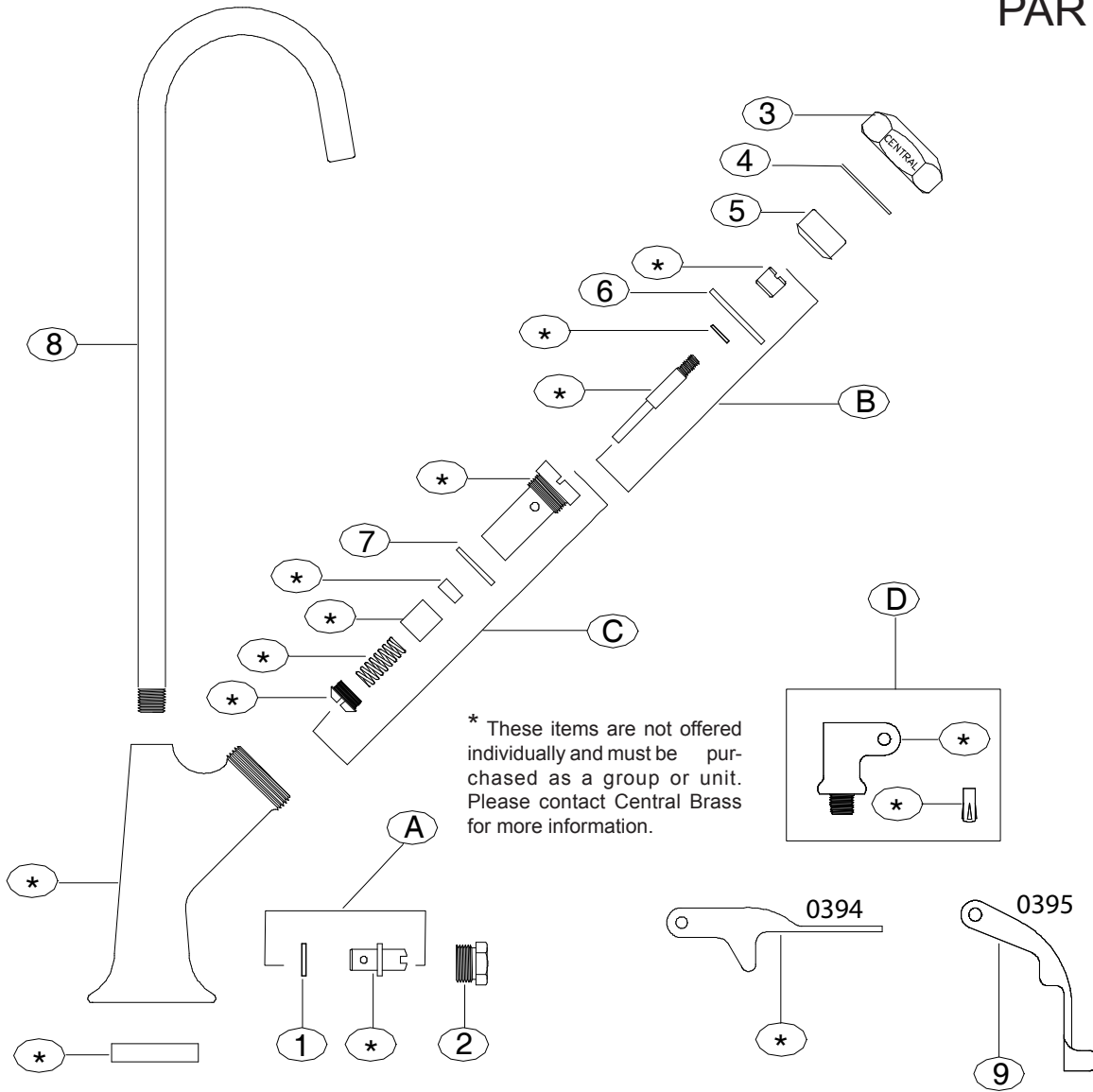
Phone: (216)883-0220 Fax: (440)526-5745

www.CentralBrass.com

Model Nos. **0393** **0394** **0395**

Glass Filler

REPLACEMENT PARTS



#	Part #	Description
A	G-756-E	Regulator Stem with Washer (X1090-HN) for
B	SU-1043-S	Push Valve Stem with Diaphragm (1043-D)
C	G-1043-C	Cylinder Assembly with Washer (X1043-FN)
D	G-6905-GE	Yoke Adapter with Pin For Item's 0394 & 0395 only
1	X1090-HN	Regulator Washer (10 pcs per pack)
2	PF-1090-J	Regulator Cap
3	PF-6930	Hex Cap Nut
4	X1043-B	Brass Washer (6 pcs per pack)
5	PF-1043-A	Push Button Cap
6	1043-D	Rubber Diaphragm
7	X1043-FN	Washer (2 pcs per pack)
8	PF-752-T	12 ¹¹ / ₁₆ inch Gooseneck Spout
9	6910	Glass Filler Arm for Item 0395 only

