

## Model# 1137-DAEL

### Two Handle Lavatory Faucet

#### FEATURES & SPECIFICATIONS

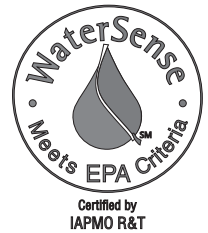
- 6" Elbow Handles With Color-Coded Indexes
- Replaceable Seats
- 3-Hole 4" Installation
- Brass Pop-Up Drain Assembly

#### FINISHES

- PC Polished Chrome

#### STANDARDS

- ASME A112.18.1
- ANSI / NSF 61, SECTION 9
- CUPC / IAPMO LISTED
- ANSI A117.1 / ADA COMPLIANT
- CONTAINS NO MORE THAN 0.25% WEIGHTED AVERAGE LEAD CONTENT



#### FLOW

- 1.2 GPM Flow Rate

#### WARRANTY

- Lifetime Limited Warranty
- Lifetime Residential Warranty
- 5 Year Commercial Warranty

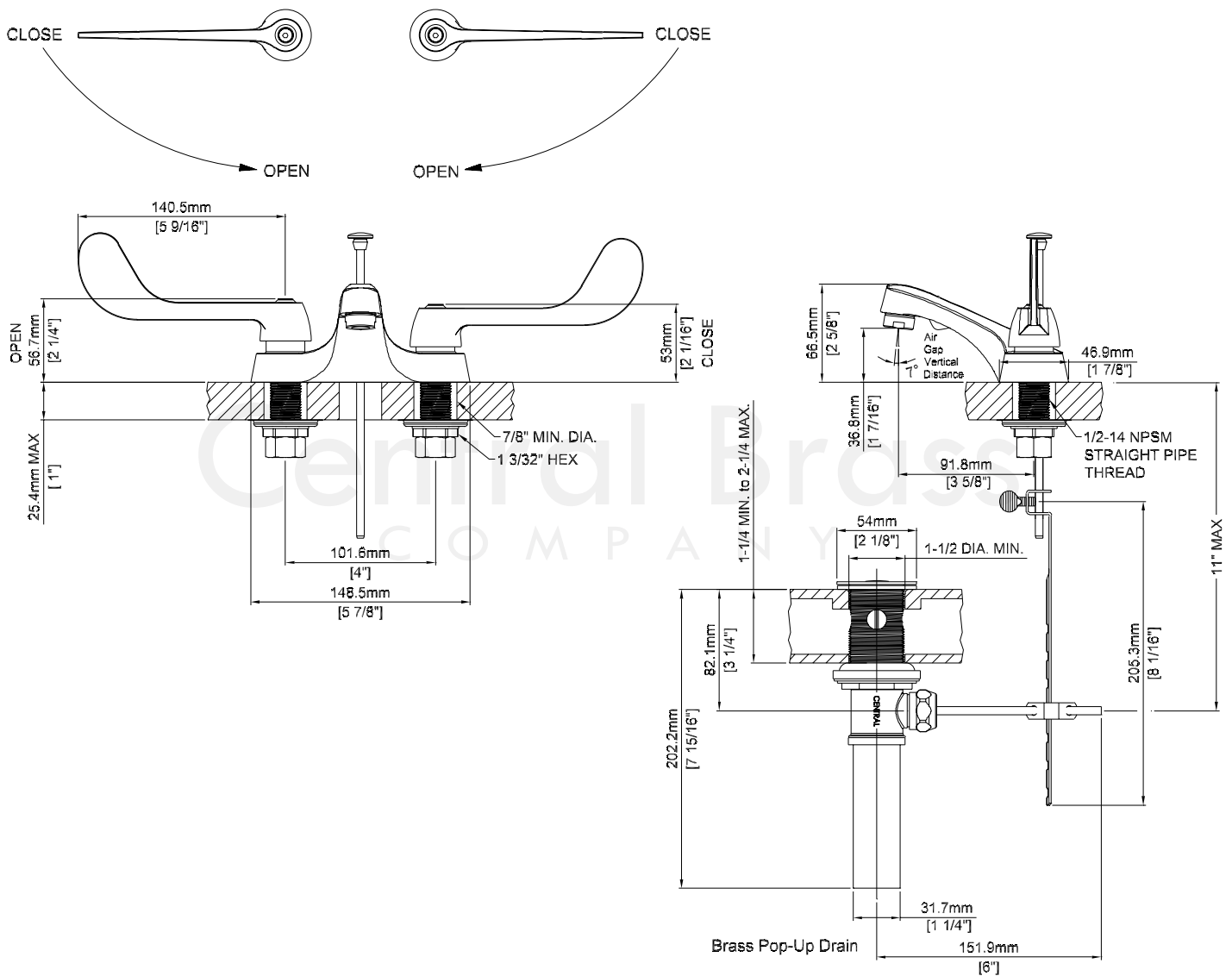
Job Name \_\_\_\_\_ Date \_\_\_\_\_  
Model Specified \_\_\_\_\_ QTY \_\_\_\_\_  
Customer/Wholesaler \_\_\_\_\_  
Contractor \_\_\_\_\_  
Architect/Engineer \_\_\_\_\_  
Submitted as Shown \_\_\_\_\_  
Submitted w/ Variations \_\_\_\_\_

1137-DAEL/REV. 10 2017

Product Specifications subject to change without notice

## Model# 1137-DAEL

### Two Handle Lavatory Faucet



1137-DAEL/REV. 10 2017

Product Specifications subject to change without notice