

Central Brass

COMPANY

A Division of Pioneer Industries, Inc.

Installation Guide

Two Handle Widespread Kitchen Faucet:

- 101172 Series
- 101173 Series
- 1172 Series (Only Kitchen Faucets)
- 1173 Series
- 181172 Series
- 181173 Series
- 81172 Series (Only Kitchen Faucets)
- 81173 Series
- 201172 Series
- 201173 Series
- 281172 Series
- 281173 Series

This product meets the following standards:

- ASME A112.18.1
- ANSI A117.1
- CUPC / IAPMO LISTED / ADA COMPLIANT (Only Lever Handles)
- CONTAINS NO MORE THAN 0.25% WEIGHTED AVERAGE LEAD CONTENT



Thank You For Choosing Central Brass Products

Thank you for purchasing this quality product.

Central Brass products are rigorously tested to provide long service under normal conditions. Prior to installation, familiarize yourself with this products diagram.

Make sure that you have all of the illustrated parts for your Central Brass product before installation.

Care Instructions

Central Brass products are designed and engineered under strict quality standards. The Central Brass Collection of PVD finishes feature a strong and durable surface that will keep your fixture looking exquisite for a lifetime.

To ensure the beautiful appearance of your Central Brass product, please adhere to the following simple care instructions:

- Use clean water to clean the surface of the faucet and dry with a 100% cotton cloth.
- You may also use any non-abrasive wax, along with a soft cotton cloth to brighten the surface and provide future protection of the finish.
- Do not use detergents, harsh cleaners, abrasive cleaners, cloths, and cleaning agents.

CENTRAL BRASS LIMITED WARRANTY

The Central Brass Company provides to the original consumer the following warranties for Genuine Central Brass manufactured products and components used in commercial or residential applications.

Central Brass Company will replace, free of charge, to the original consumer purchaser, any and all parts that prove defective under normal installation, use, and service. This warranty does not cover damage or defects due to normal wear and tear, misuse, abuse, accident, or improper installation. Replacement parts can be obtained from your local dealer or directly from Central Brass Company. Central Brass Company recommends using a certified plumber for all faucet installation and repair. Dated proof of purchase must accompany all warranty claims.

FAUCET WARRANTY

The Faucet, defined as any metal cast, forged, stamped or formed portion of the product, not including moving parts or other components covered under other Central Brass warranties, is warranted against manufacturing defects for the life of the product.

CARTRIDGE WARRANTY

Genuine Central Brass cartridges incorporated in Central Brass products are warranted against manufacturing defects for a period of five (5) years from the date of purchase.

SENSOR FAUCETS

The mechanics of the Central Brass Sensor Faucets are warranted for five (5) years from the date of installation. The electronics and solenoid are warranted for a period of one (1) year from the date of installation.

FINISH WARRANTY - COMMERCIAL

PVD finishes installed in public or commercial areas are warranted not to corrode, tarnish or discolor for a period of five (5) years from date of purchase.

FINISH WARRANTY – RESIDENTIAL

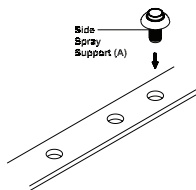
PVD finishes installed in residential use applications are warranted not to corrode, tarnish or discolor for the life of the product.

Faucet Installation

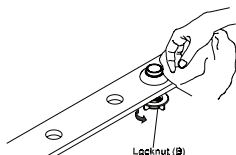
For the Faucets with Side Spray

1. place the side spray support (A) through the sink hole. Apply adequate amount of plumbers putty or sealant along the boundary of the side spray support (A).
2. Hand tighten the locknut (B) from underneath of the sink. Remove excess plumbers putty or sealant from the side spray support (A).
3. Insert the side spray (C) and hose through the side spray support (A).

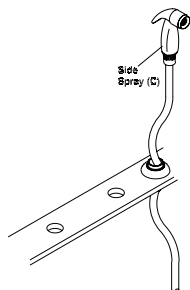
1 Installation For Faucets
With Side Spray



2

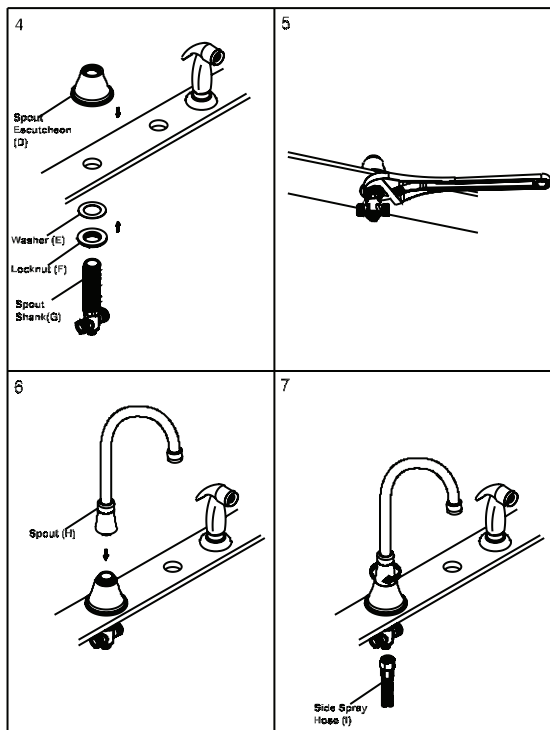


3



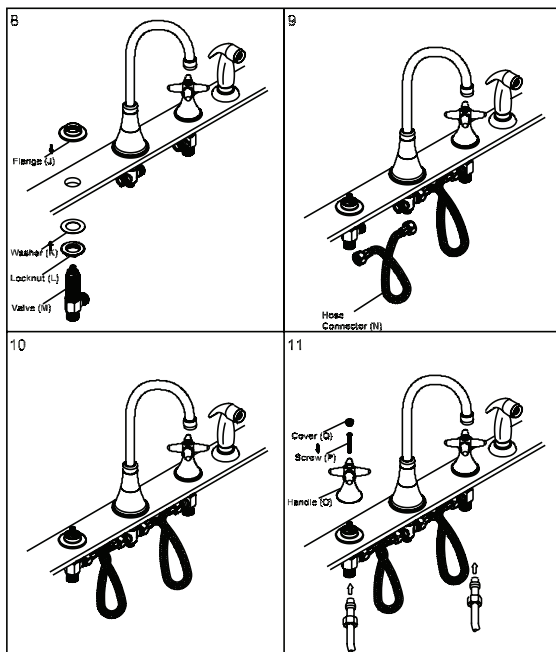
Faucet Installation

4. Thread locknut (F) and washer (E) on the spout shank (G). Insert the spout shank (G) through the mounting hole from the bottom of the mounting surface. Apply plumbers putty or sealant underneath of the spout escutcheon (D). Thread spout escutcheon (D) from the top to the spout shank (G).
5. Tighten the locknut (F) from underneath of the mounting surface.
6. Install the spout(H) to the spout shank (G) from the top.
7. For the faucets with Side spray:- Apply teflon tape to threaded connection. Thread side spray hose (I) to the bottom outlet of the spout shank (G) from underneath.



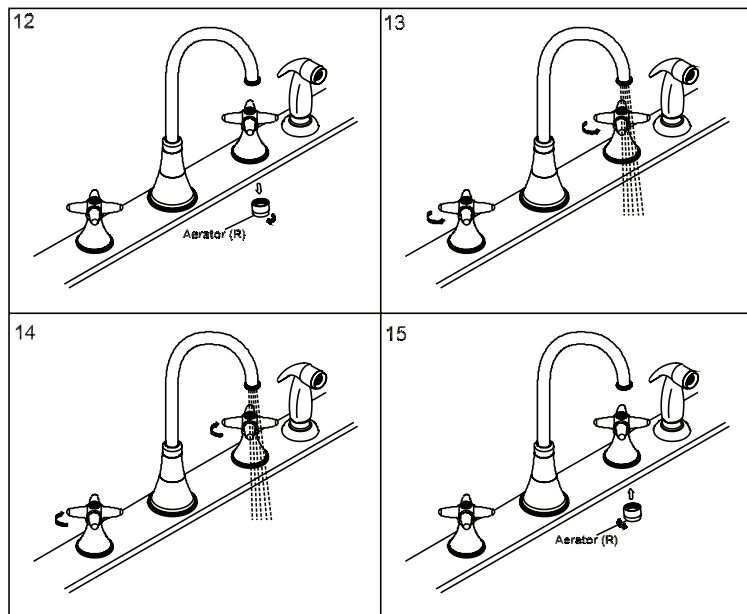
Faucet Installation

8. Apply plumbers putty underneath of the flange (J). Place the flange (J) from the top. The hot side valve should have 'HOT' marking. Place the hot side valve with washer (K) and locknut (L) from underneath of the mounting surface. Thread the flange (J) on the valve. Adjust the valve to proper height.
9. Make sure the valve outlet faces toward the spout. Apply teflon tape at the threaded connections. Install the hose (N) to connect from the valve to spout shank (G).
10. Install the Cold side valve in the same way.
11. Install both side handles (O). Install them with the help of screw (P). For L1 and C1 handles place cover (Q) on the top of the handle. Connect the supply stops to the inlet supply lines (left is hot water supply and right is cold water supply). Make sure inlet supply lines are securely tighten. Do not overtighten. Turn on supply stops.



Faucet Installation

12. Remove aerator (R).
13. Open the handles. Flush and allow water to run at full flow for at least one minute. Check for any leaks. For Faucets with Side spray:- Push on side spray to ensure the water diverts completely from spout to side spray.
14. Close the handles.
15. Replace aerator (R).



For more care information or trouble shooting inquiries about your Central Brass product, please see the contact information on the back page.

Central Brass

C O M P A N Y

A Division of Pioneer Industries, Inc.

6892 Snowville Road | Brecksville, Ohio 44141
Telephone: (800) 321-8630 | (216) 883-0220 | Fax: (800) 338-9414
Hours: M - F, 7:30am to 5:00pm EST
www.centralbrass.com